



# MONTHLY MEMBERSHIP PROGRESS REPORT

District 29 C

Results as of: 05/31/2019

GMT: CINDY GREGG

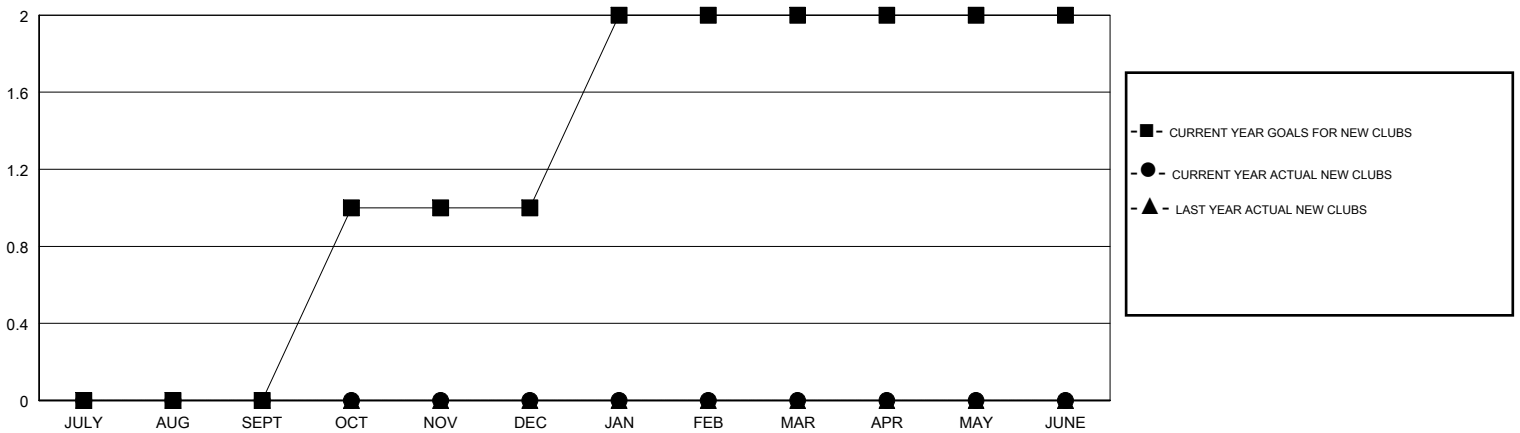
LOCATION WEST VIRGINIA

GMT CA

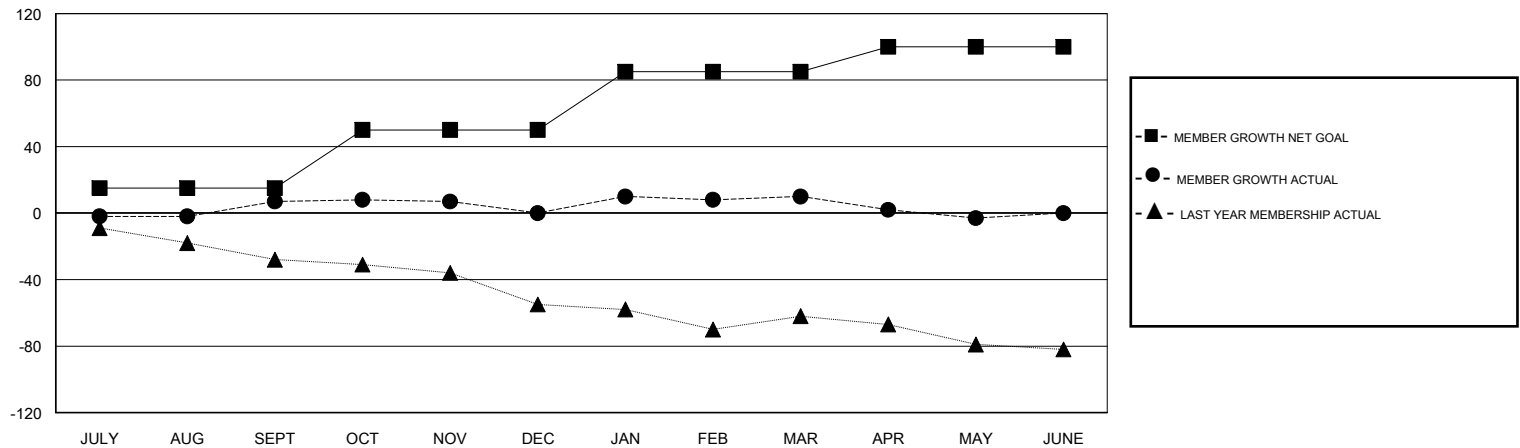
Clubs			
RESULTS FOR 2018-2019			
QUARTER	NEW CLUB GOAL	NEW CLUBS	DROPPED CLUBS
JULY/AUG/SEPT	0	0	0
OCT/NOV/DEC	1	0	0
JAN/FEB/MAR	1	0	0
APR/MAY/JUNE	0	0	0

Members			
RESULTS FOR 2018-2019			
QUARTER	MEMBER GROWTH NET GOAL	MEMBER GROWTH ACTUAL	DROPPED MEMBERS ACTUAL (including transfers)
JULY/AUG/SEPT	15	26	15
OCT/NOV/DEC	35	17	22
JAN/FEB/MAR	35	40	29
APR/MAY/JUNE	15	21	34

GOALS AND ACTUAL NEW CLUBS CUMULATIVE



GOALS AND ACTUAL MEMBERS CUMULATIVE



DROPPED CLUBS: 0
------------------

34 CLUBS OF 57 ADDED 1 OR MORE NEW MEMBERS

GENDER DISTRIBUTION	
MALE	786 (67.35%)
FEMALE	381 (32.65%)
Women Percentage Fiscal Year Goal: 30%	

DROPPED MEMBERS	
DECEASED	18
CLUB CANCELLED	0
OTHER	82
<b>TOTAL</b>	<b>100</b>

[CLICK HERE FOR CUMULATIVE MEMBERSHIP DATA](#)

TOTAL FAMILY UNIT MEMBERS	318
FAMILY MEMBERS PAYING HALF DUES	162